



# Great Wyrley Academy

**A part of the Windsor Academy Trust**

Headteacher: Mr Ian Moreton, BSc Hons, NPQH FCCT

Our ref: H:letterstoparents/y1011careersevent

22 October 2021

Hall Lane  
Great Wyrley  
Staffordshire  
WS6 6LQ

Tel: 01922 419311

Email:  
[info@greatwyrley.windsoracademytrust.org.uk](mailto:info@greatwyrley.windsoracademytrust.org.uk)

Website: [www.greatwyrleyacademy.org.uk](http://www.greatwyrleyacademy.org.uk)

Twitter: @wyrleyacademy

Company registration no: 07523436  
Place of registration: England

## iPads for Learning - Flexible Holiday Use

Dear Parents/Carers

As you know, the iPads are a dedicated learning device and during term time content on the iPads is centrally controlled through managed Apple IDs. We also stated that we would give you the flexibility to manage content on your child's behalf during holiday time.

This letter sets out the options that are available to you during the half term break and the steps that you need to take.

### Options available for your child's iPad during the half term holiday

#### **1. Continue to use the iPad for learning only**

If you want to use the iPad for learning only, you do not need to do anything. Your child can continue to use the iPad with the apps that are already installed for learning.

#### **2. Use the iPad for learning and leisure by setting up Apple's Family Sharing**

Family Sharing allows you to agree and monitor the Apps that go on to your child's iPad. You will need to set up Family Sharing using another Apple device (e.g. iPhone or iPad), and you can then enter the Apple ID you created into your child's iPad from Saturday 23 October.

You can find instructions on how to set up Family Sharing and what to do on return to school on the next page. You can also find screenshot instructions of how to help your child use the Apple ID to login into 'Media and Purchases'. **Please do NOT** sign out of the iCloud side of their account (which needs to be continued to be logged in with the school managed Apple ID).

**It is important to make clear that whichever option you choose, it is your responsibility to ensure that your child is using the device safely and accessing age-appropriate material at home.**

We advise that you do not put your own Apple ID into your child's iPad directly or do not set them up their own Apple ID. Family sharing is the safest and most effective way to create an Apple ID for a child. It means that you have oversight of Apps for your child. A reminder that the legal age for a child to have their own Apple ID (E.g. not through family sharing) is 13.

Kind regards

*Z. Edwards*

Mrs Z Edwards  
Assistant Headteacher  
Strategic Lead for Teaching and Learning



## Family Sharing Instructions

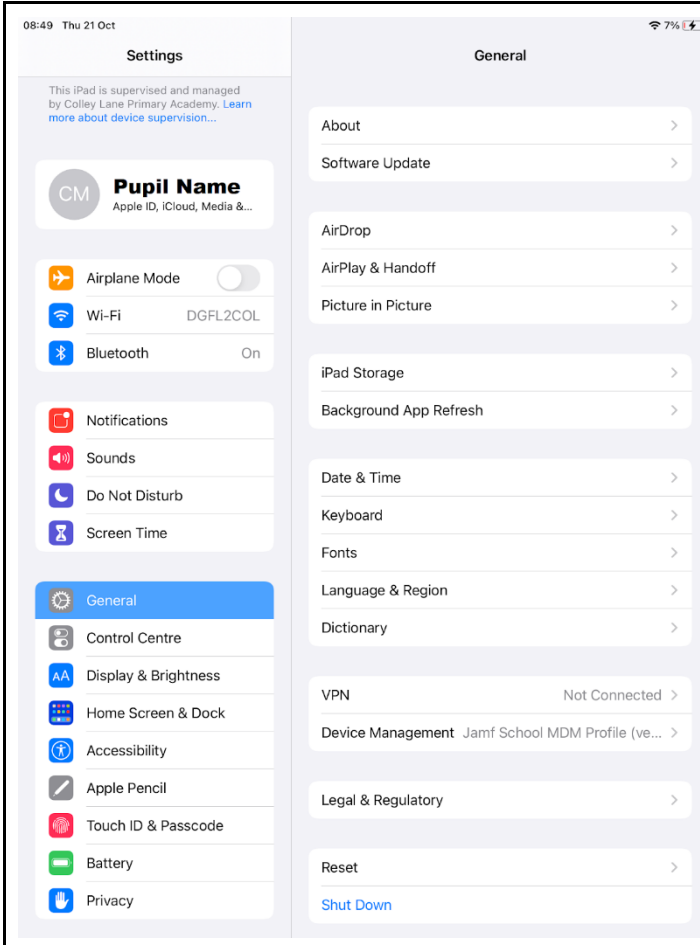
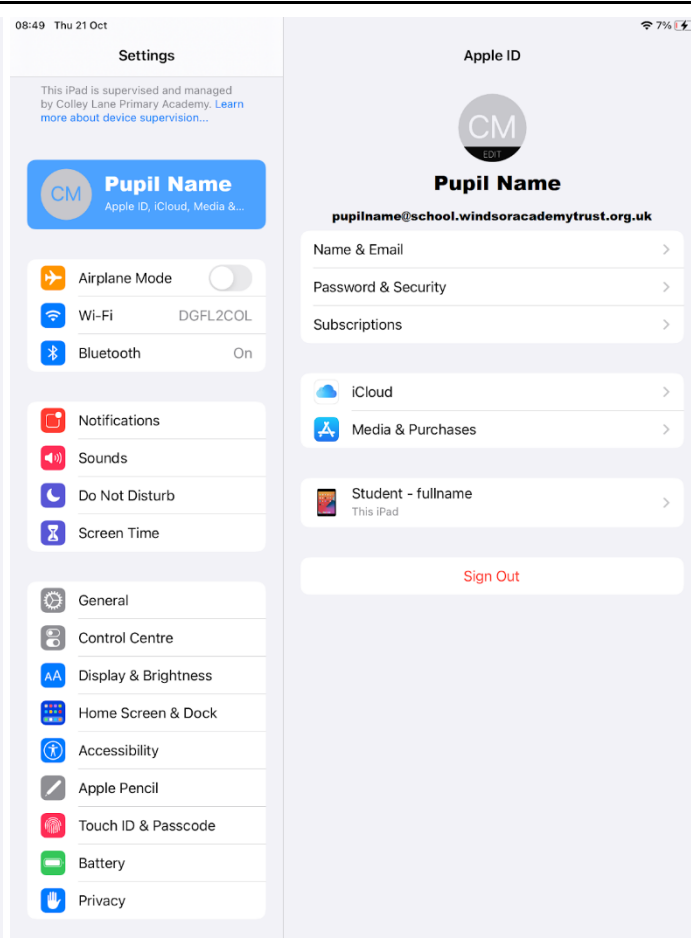
### 1. Setting up and using Family Sharing

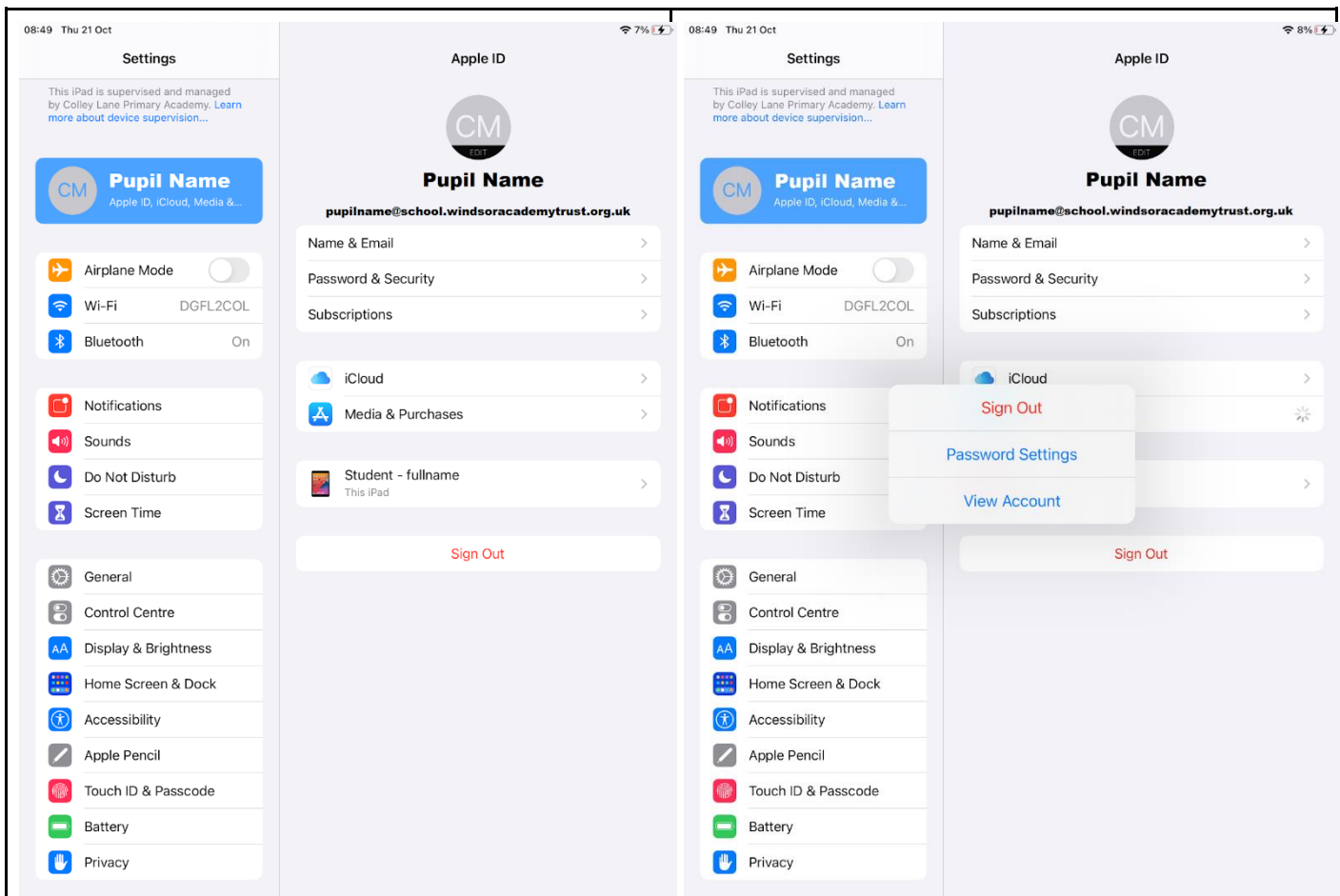
1. Set up Family Sharing by following these instructions: <https://support.apple.com/en-gb/HT201088>
2. Next, create a Family Sharing Apple ID for your child by following these instructions: <https://support.apple.com/en-gb/HT201084#create>
3. Once you've set up Family Sharing, follow this step by step guide to add your child: <https://support.apple.com/en-gb/HT208506>
4. Make sure that 'Ask to Buy' <https://support.apple.com/en-gb/HT201089> is enabled in the setup process so that you can control the apps that your child downloads.

### 2. What to do on return to school

Your child does not need to logout of the family sharing personal Apple ID. The devices will automatically switch back to restricted mode at the start of term and personal Apps will disappear until the next holiday period. If your child experiences any problems with this process then they should seek support from school on their return. **Please make sure that your child has moved or deleted any personal photos or videos off the iPad by the evening of Sunday 31st October.**

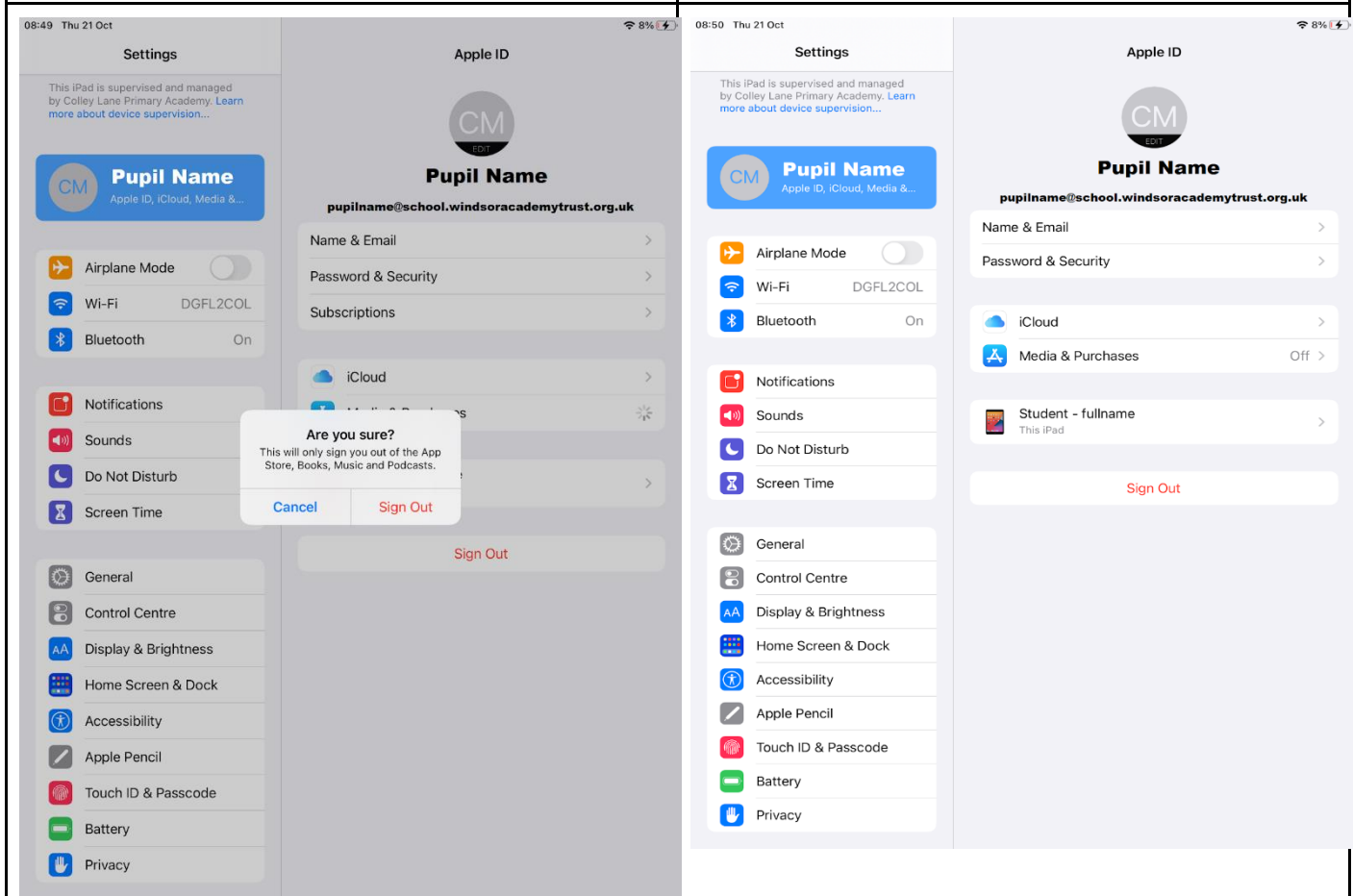
### 3. Screenshots to show how to login to 'Media and Purchases' and how NOT to logout of the school managed Apple ID in iCloud

	
1. Go to the Settings app.	2. Click on the Apple ID section circled above.



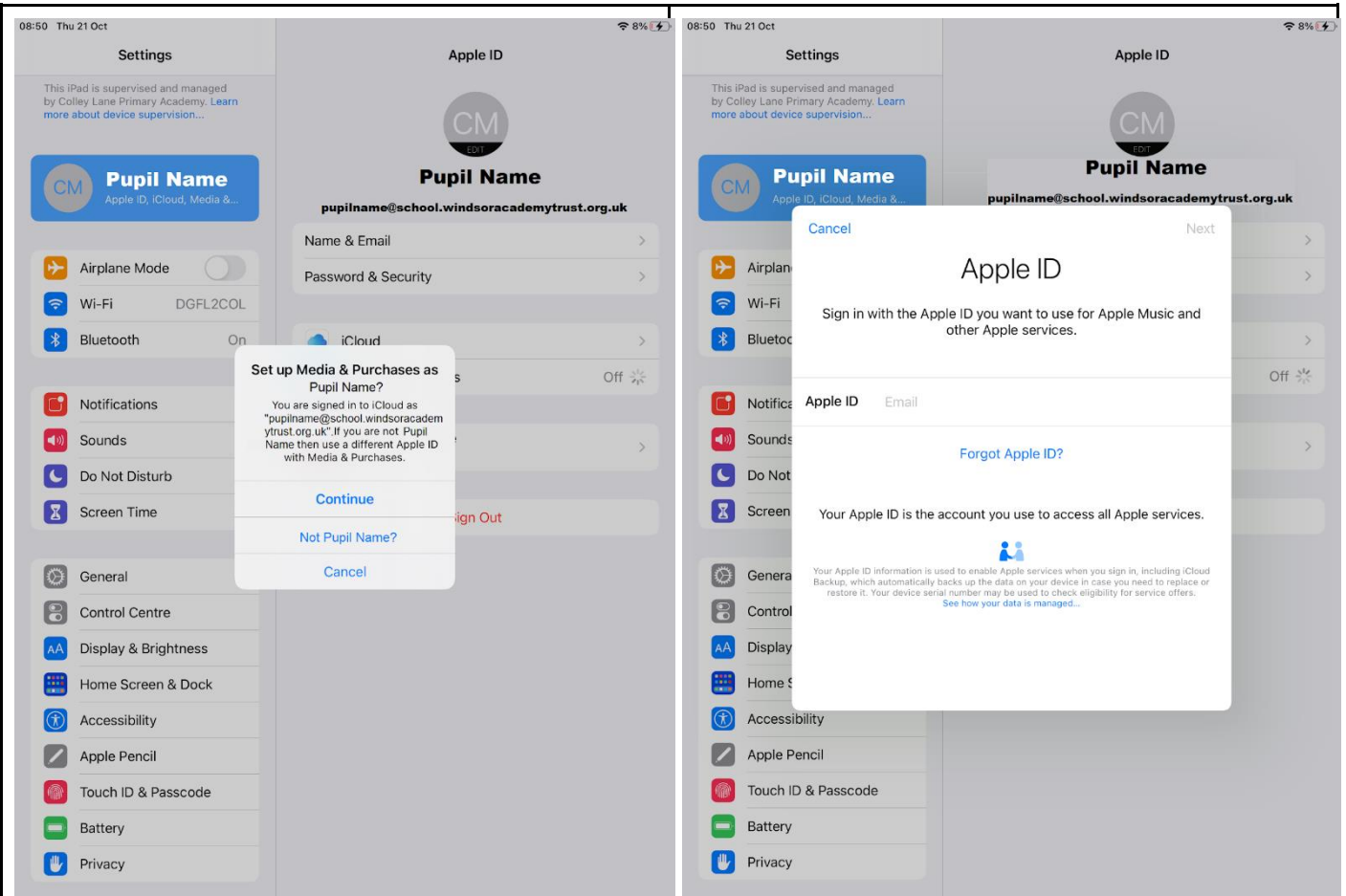
**Do not** sign out of the Managed Apple ID (circled above).

3. Click on 'Media and Purchases', and press 'Sign Out'.



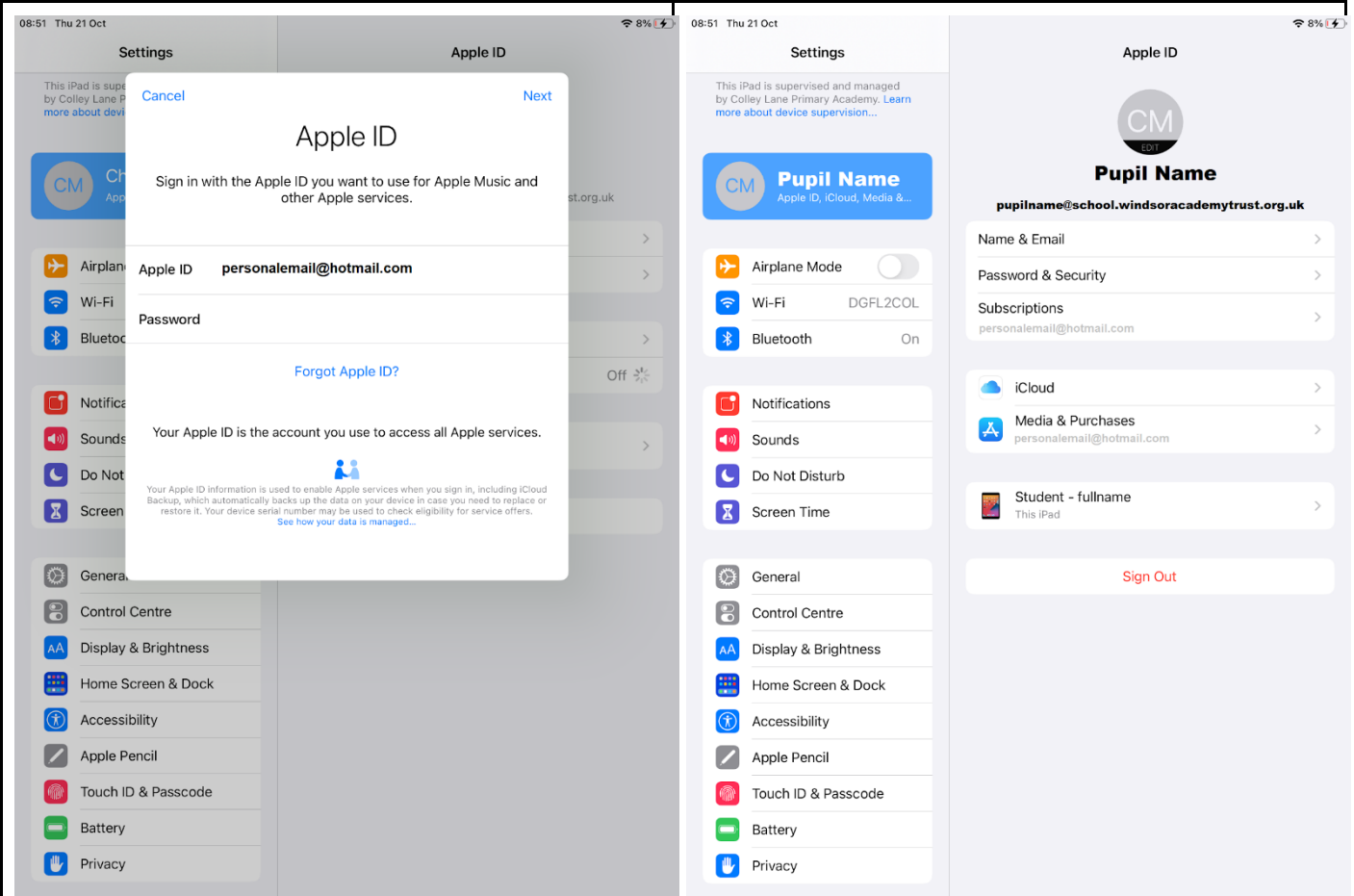
4. Press 'Sign Out' again.

5. You should now see 'Media and Purchases' is set to 'Off'.



6. Press on 'Media and Purchases', and then press "Not [Pupil Name]?".

7. You should then be prompted to sign in with an Apple ID.



8. Sign in with your personal Apple ID.

9. You should then see your personal Apple ID appear underneath 'Subscriptions' and 'Media and Purchases'.