



Part of



2023-2024 PROSPECTUS

We help students achieve their ambitions



greatwyrleyacademy.org.uk



Contents

Welcome	4
Why Great Wyrley Academy?	5
Recommended by Parents and Students	7
Helping Students Achieve their Ambitions	8
Brilliant Facilities	12
A Welcoming and Supportive Environment	14
Inspiring Teaching and Learning	18
Extraordinary Opportunities	22
Preparing Students for their Next Step	26
How to Apply to Join Our School	30
Visit Our School	32
Part of the Windsor Academy Trust Family	34

Welcome



Kelly Moore
Headteacher

Welcome to Great Wyrley Academy. It is an honour and a privilege to be the Headteacher of this brilliant school.



Our school has gone from strength to strength since becoming an academy and joining the Windsor Academy Trust family in September 2018. There have been increases in exam results and student progress, and significant investment into our buildings and resources, bringing our school into the twenty-first century and adding to our outstanding range of facilities.

This year we also received a 'Good' rating in our Ofsted inspection and we are excited to continue to build on this as we go on in our journey from 'Good' to 'Great'.

We endeavour to ensure that each and every student in our care fulfils their potential, both academically and personally. Students leave our school with fantastic qualifications and have had opportunities and life experiences that great schools should afford. We have a student pledge, things that all students should experience before they leave school. It is important to us that we help them fulfil this.

So come and visit us! I look forward to welcoming you to Great Wyrley Academy, to serving you as Headteacher of your child's secondary school and to seeing your child fulfil, and hopefully exceed, their full potential.



Welcome Video

Why Great Wyrley Academy?

There are lots of reasons for choosing Great Wyrley Academy as your first choice for secondary school. Here are just a few.

Brilliant Facilities

We have brilliant facilities, particularly for performing arts and sport. Highlights include our 150-seat theatre, dance studio, workshops, swimming pool and brand new artificial 3G pitch. We also have lots of outdoor space for students to relax and have fun with friends.



More than Academic Success

We focus on much more than just academic success. Students have the opportunity to take part in a huge range of extracurricular activities that allow them to follow their passions, develop new skills and unlock their personal potential. Encouraging participation in house competitions and extracurricular activities fosters teamwork, healthy competition and a sense of belonging among our students.

'Pupils can develop their interests outside of the classroom by taking part in a growing range of activities'

- Ofsted 2023



Why Great Wyrley Academy?

Inspiring Teaching and Learning

Our fantastic teachers are committed to unlocking every child's academic and personal potential and providing them with the skills they need for their future. Powered up by digital technology, our inspiring teaching and learning helps students generate a love of learning and achieve their potential.

'Many staff are experts in their subject; they have a deep understanding of how pupils learn'

- Ofsted 2023



A Welcoming Environment

We are incredibly proud of the warm and welcoming environment at our school. Built upon a culture of respect, responsibility and shared values, students settle in quickly, make friends and enjoy their time with us.

Please read the full Ofsted report [here](#).

An announcement from the Headteacher can be seen [here](#).



Recommended by Parents and Students

What do parents and students think of our school? See for yourself below!

I was very apprehensive about my daughter starting High School, especially as she was shy, timid and has an August birthday.

The teachers and support staff have helped my daughter gain confidence and have given her choice to explore interests and activities during and after school. The individual nurturing from all staff at Great Wyrley Academy has been outstanding during her first year.

We can't wait to see the achievements and successes she makes in her time at school.

— Year 7 Parent

We asked some students what they liked the most about Great Wyrley Academy following our recent Ofsted inspection. This is what they said [here](#).

'My favourite thing about Great Wyrley Academy is how driven the school is to improve and be the best it can be. Students and the school aspires to be better'

'My favourite thing about Great Wyrley Academy is a sense of community in the school. I've been given opportunity after opportunity to pursue my passions. Being here has really allowed me to learn more about myself and set me up to be my best self as a young adult'

'The thing I like best about Great Wyrley Academy is that you have the freedom to express yourself in multiple different ways which really helps you to grow your own confidence and discover what your passion is'

'My favourite thing about Great Wyrley Academy is that I have been able to represent the school in trips and football games. This has allowed me to unlock my personal potential'



Helping Students Achieve their Ambitions

Helping students achieve their ambitions drives everything that we do. Our goal is to unlock students' academic and personal potential, and we accomplish this through excellent teaching, an engaging curriculum and extraordinary extracurricular opportunities.

One thing that makes our school truly unique is our ASPIRE framework. ASPIRE develops our students' character virtues and learner skills to become the best learners and best people they can be in every lesson, every day.





As well as developing character and learner skills, we focus on developing students leadership skills. Leadership is central to everything we do, and we encourage students to be leaders in all ways. Students have access to lots of leadership opportunities in the classroom, as part of the school senate and within their school houses, to name a few.

Our teaching and learning is powered up by digital technology to provide students with the essential skills they need in a rapidly changing and digital world. Our teachers create inspiring learning experiences through the use of technology and iPads for Learning - a partnership with parents which provides students with an iPad to use in school and at home as part of their learning.

Learning at our school goes way beyond the classroom. Students have the chance to take part in a vast range of extracurricular activities and incredible opportunities. This includes joining school clubs, working with employers and former students, supporting charities, participating in house competitions and our famous activity week.



Our Students ASPIRE

Our ASPIRE framework develops both the academic and personal potential of our students.





Learning Beyond the Classroom

Learning extends way beyond the classroom with a vast amount of house activities, extracurricular and leadership opportunities.

Brilliant Facilities

We are incredibly proud of the brilliant facilities that we have at our school. Many of our facilities aren't available elsewhere, and they provide a great learning environment for our students.

View some of our facilities on this page and take a virtual tour of our school by scanning the QR code.





A Welcoming and Supportive Environment

We understand that joining secondary school is a big step for your child. That's why we offer a comprehensive transition programme that enables students to settle in quickly and make the best start to secondary school life.

Our transition programme includes inviting children to our New Intake Day, where they can get to know their way around school, experience taster lessons and make friends with other students joining in year 7. Parents are also invited to our New Intake Evening, where they meet our leadership team, heads of year and form tutors, and get essential information to prepare for their child joining our school.





Once at our school, your child will experience our welcoming and caring community. This is built on traditional values and the 'Wyrley Way', a charter committed to by our whole school community that promotes respect and responsibility.

We provide excellent care through our pastoral team and house system. The pastoral team consist of heads of year, form tutors and a non-teaching pastoral assistant who oversees your child's progress and provide the support they need to succeed.

Students are managed pastorally through year groups. The school is then divided into houses which are overseen by House Leaders.

Our school is divided into four houses that provide students with the opportunity to participate in charity work, a range of activities and inter-house competitions. This builds students' confidence, develops their character and, importantly, allows them to have fun!



Helping Students Settle

Our comprehensive transition programme helps students settle quickly into secondary school life and make new friends.





Outstanding Student Support

Our pastoral team support students throughout their time at our school.

Inspiring Teaching and Learning

We aim to engage, enthuse and inspire students in every lesson, every day. We have a culture of high aspirations, and our brilliant teachers challenge and support each student to develop and achieve their potential.

Our broad curriculum builds on learning experiences from primary school and focuses on helping students master the skills, knowledge and understanding needed to progress and succeed. Our curriculum is based on research-based evidence, and we continuously review and improve it to provide a world class learning experience that achieves excellence for all.





Our curriculum is powered up by digital technology to provide a modern and innovative learning experience. This maximises progress and provides students with the essential digital skills they need for their future.

Students will study in a digitally-rich environment with computer suites, interactive whiteboards and digital tools, including G-Suite for Education and Apple Classroom.

Empowered - Providing free iPads to students

Our 1:1 digital learning approach provides all students in Years 7 to 11 with their own iPad to use in school and at home.

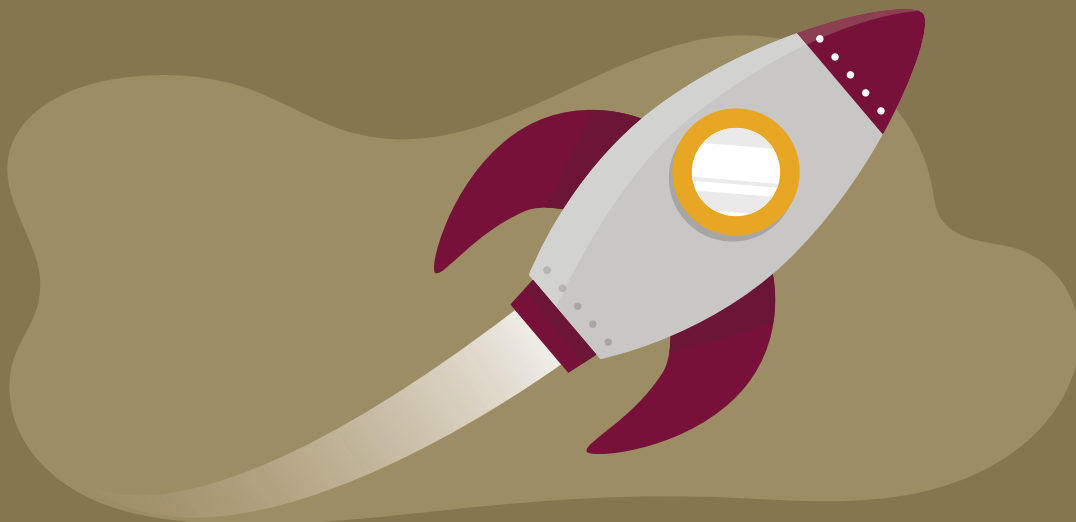
Taking place across all schools in the Windsor Academy Trust family, the initiative is part of our a shared commitment to unlocking academic and personal potential.

1:1 digital learning is fully embedded into our curriculum to provide inspiring learning experiences that maximise learning and progress in and outside the classroom.

Developing great learners and great people

Students develop their initiative, independence and resilience to become the best learners and best people they can be.

We don't just focus on academic development. Through our ASPIRE framework, students develop their academic and personal potential. Students develop their initiative, independence and resilience and learn the learner skills and character virtues to become the best learners and best people they can be.



Powered by Digital Technology

Our curriculum provides students with the essential digital skills they need for their future.





High Expectations

Our culture of high expectations challenges and drives students to achieve their full potential.

Extraordinary Opportunities

At our school, your child will have access to extraordinary opportunities that support their development.

The WAT Pledge is our promise to students of 12 experiences/ accomplishments that they will achieve before leaving school. This includes cultural, educational and personal development experiences that stretch and challenge students to unlock their potential.





Within our houses, students participate in inter-house competitions and participate in a wide range of activities such as charity work. In addition, our thriving extracurricular programme offers a vast range of opportunities that allow students to develop essential life skills and follow their passions. To further expand learning beyond the classroom, we run trips and visits, run the Duke of Edinburgh Award scheme, invite former students back to our school to inspire students and host our famous activity week - a week of brilliant, fun-filled activities!

Student leadership is an essential part of our school experience. Students have access to substantial leadership opportunities within the classroom, their houses and as part of the student senate. This helps develop tomorrow's leaders today and enables students to develop essential skills needed for their further education and future careers.



Our Promise to Students

The WAT Pledge guarantees students will achieve 12 experiences/accomplishments before they leave school.





Developing Tomorrow's Leaders Today

Student leadership is an essential part of our school experience.

Preparing Students for their Next Step

In addition to helping students succeed, we ensure they are prepared for their next step, whether progressing to sixth form or college, doing an apprenticeship, or starting their career.

Our careers curriculum provides experiences and tools to explore their options and gain information about careers. This is supported by independent and impartial guidance from our careers advisor. Students participate in various activities such as careers and enterprise challenges, work experience, and further education sessions.





Aspire Sixth

Many of our students choose to continue their education at our sixth form, Aspire Sixth. Students can study a wide range of A Levels and vocational courses (eg BTECs) and use their own dedicated facilities at our school, including study rooms and a UCAS library.

Students studying at Aspire Sixth benefit from subject specialist teachers, fantastic student support and access to the brilliant facilities at both our school and Cheslyn Hay Academy. Exam results at Aspire Sixth are consistently good, and students progress to brilliant destinations, including leading universities and apprenticeships.



Find out more about Aspire Sixth
at aspire-sixth.org.uk



Excellent Progression

98%

of sixth form students have progressed to a university of their choice in the past three years.





How to Apply to Join our School

Admissions to our school are handled by Staffordshire County Council.

You will be contacted directly by the council to apply for a place in Year 7 and can apply online or by completing a paper application form. The council will then contact you in March to inform you which school your child has been allocated to.

The timeline on the right shows the key stages of the application process.



Admissions Timeline



Visit Our School

There's no better way to experience Great Wyrley Academy and to find out if it is the right school for your child than by visiting us.

Visit Our Open Evening and Open Mornings

Our open evening and open mornings provide the ideal opportunity to visit our school. This year, they take place at the following times:

- **Open Evening - 27 September 2023, 6pm to 8pm**
- **Open Mornings - 2 to 4 October 2023, 9:30am - 12pm**

Find out more at greatwyrleyacademy.org.uk/open-events

Arrange a Visit

If you can't make one of our open events you can arrange a school visit. To arrange your visit, simply scan the QR code below.





Part of the Windsor Academy Trust Family

Windsor Academy Trust (WAT) family - a community deeply committed to the principle of unlocking the academic and personal potential of every student.

Our Trust Dividend - the value derived from our shared moral purpose and the collective responsibility we uphold, amplifies our capabilities to create an exceptional educational environment for our students. Being a part of the WAT family doesn't just mean belonging to a school; it means joining a purpose-driven community dedicated to nurturing both academic and personal growth.

Our shared 'why' is firmly rooted in the belief that every student can succeed academically and personally, regardless of their background, and that schools play a vital role in unveiling this potential. The WAT family stands as a testament to this belief, demonstrating how we strive to balance both aspects of student development, thus reinforcing the value of inclusivity and community.

As a significant civic actor and a contributor to the education system, the WAT family goes beyond seeing schools as individual units. We recognise the transformational power of education and advocate that it can be better unleashed through schools in families, as opposed to stand-alone schools.

By choosing a WAT family school, you are joining us on a journey towards unlocking potential, fostering dreams, and creating a brighter future. We look forward to welcoming you into our thriving community.



Dawn Haywood
CEO, Windsor Academy Trust



We are incredibly proud to be part of the Windsor Academy Trust family.

Cheshire

Staffordshire



12
SCHOOLS



7,500
CHILDREN



1,100
STAFF

The number of
children who have
*unlocked their
potential* in the
past 12 years

47,327





Hall Lane, Great Wyrley, WS6 6LQ

01922 419311

info@greatwyrley.windsoracademytrust.org.uk



greatwyrleyacademy.org.uk

Part of



Windsor
Academy Trust